



MATA

**24-05 PRESSURE WASHING SERVICES AT AMERICAN WAY &  
WILLIAM HUDSON TRANSIT CENTER  
QUESTIONS & ANSWERS**

**APRIL 3, 2024**

QUESTION 1

Is there a current contract/budget?

**Yes.**

QUESTION 2

Is this bid Solicitation only for DBE's companies?

**No, this bid is not for DBE companies only, however, contractors must meet the 12% DBE goal to participate. If a prime is using a sub to meet the DBE goal, then the DBE must be certified and complete all documentation. Prime contractors must show good faith efforts as defined in Section D, Utilization of Disadvantage Business Enterprise.**

QUESTION 3

If a vendor is getting their DBE Certification, will they be considered as DBE Certified?

PAGE - SECTION A-5, 7.1- GENERAL DBE INFORMATION/ PARAGRAPH A  
**Certification in the State of Tennessee must be achieved by the time the bids are due, otherwise, the participation of a proposed DBE firm cannot be counted toward the goal. If a proposed DBE firm is not certified at the time the bids are due and, as a result, the goal is not met, then the bid will be considered “non-responsive” and rejected unless the Good Faith Efforts have been accepted as satisfactory.**

QUESTION 4

Is there a form for Good Faith Efforts or is it just preferred?

**There is no form for Good Faith Efforts, however, documentation showing due diligence in finding a DBE must be included with the bid as noted in Section D, Utilization of Disadvantage Business Enterprise, 5. “Good Faith Efforts”. Documentation must be clear.**

QUESTION 5

Will there be any security on site during cleaning hours?

**Security Staff will be on site:**

**Hudson:**

**M-F 4:00 AM – 12:30 AM**

**Sat 6:00 AM – 11: 00 PM**

**Sun 8:00 AM – 7:00 PM**

**American Way:**

**M-F 5:00 AM – 11:30 PM**

**Sat 8:00 AM – 8:30 PM**

**Sun 8:00 AM – 6:30 PM**

QUESTION 6

Will there be plenty of light for the cleaning crew to see how to work?

**Yes.**

QUESTION 7

What are the expectations for cleaning the asphalt at the American Way location?

**At both locations, clean all stains and remove gum, with CLEANING CHEMICALS that are BIO-DEGRADABLE AND ENVIRONMENTALLY SAFE**

QUESTION 8

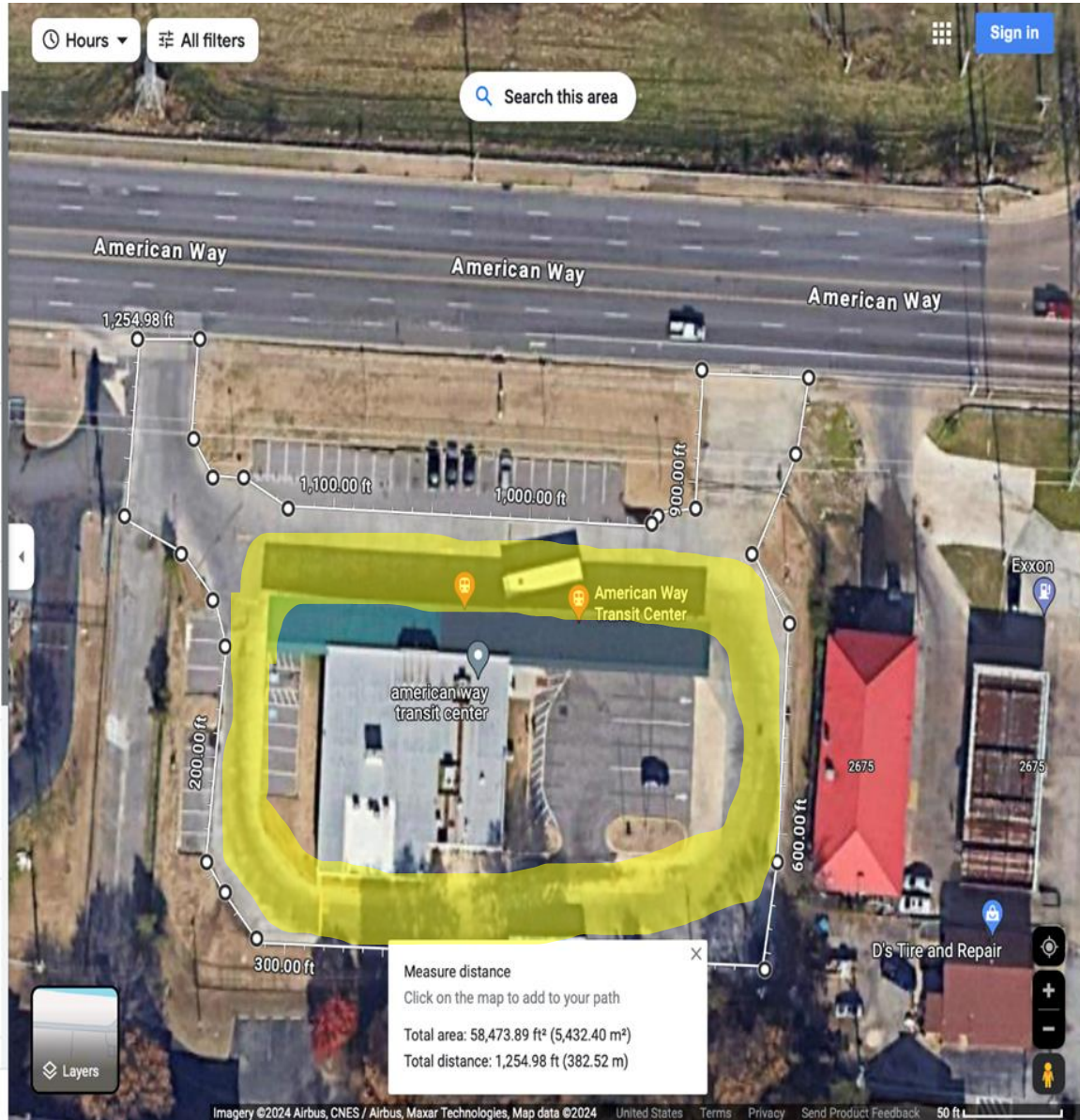
Where should the cleaning boundaries start and stop at American Way?

**American Way -The cleaning boundaries begin with the driveway where the buses are staged in the side curve area, in the front of the building, and the narrow driveway that circles to the back of the building cleans the entranceways, waiting areas, and benches. This does not include the whole parking lot.**

**North End Terminal- The Cleaning boundaries are on the second street side, underneath the canopy, where the buses enter and park. Clean the sidewalks, waiting areas, and benches.**

**Clean the sidewalk, beginning at the door entrance, located on Main Street from corner to corner.**

AMERICAN WAY TRANSIT CENTER  
3921 MEMPHIS, TN. 38023



**WILLIAM HUDSON TRANSIT CENTER**  
**444 NORTH MAIN STREET**  
**MEMPHIS, TN. 38103**

